



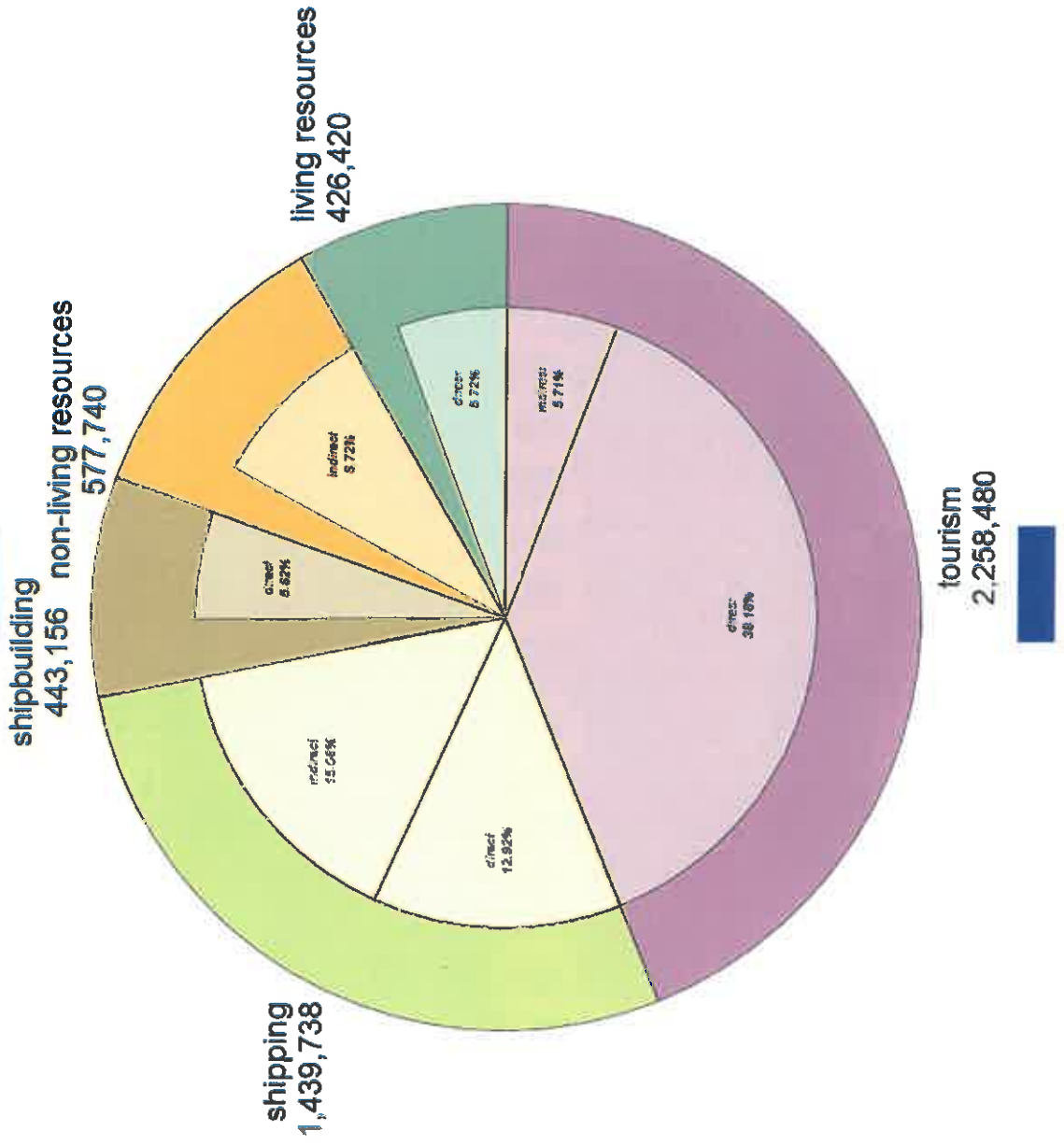
blue growth

Long Distance Fleet Advisory
Council
Lisbon, 31 May 2016

employment in blue economy



European Commission



living resources



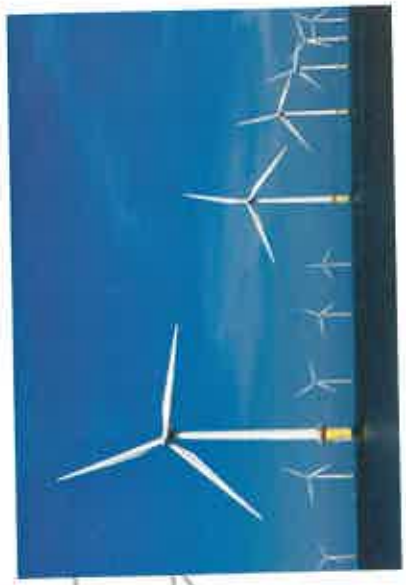
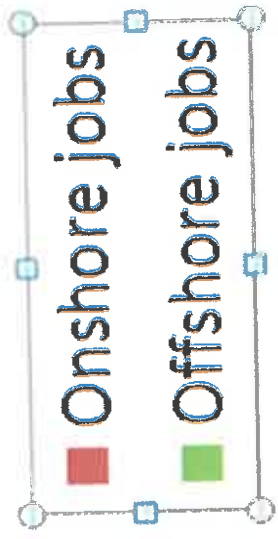
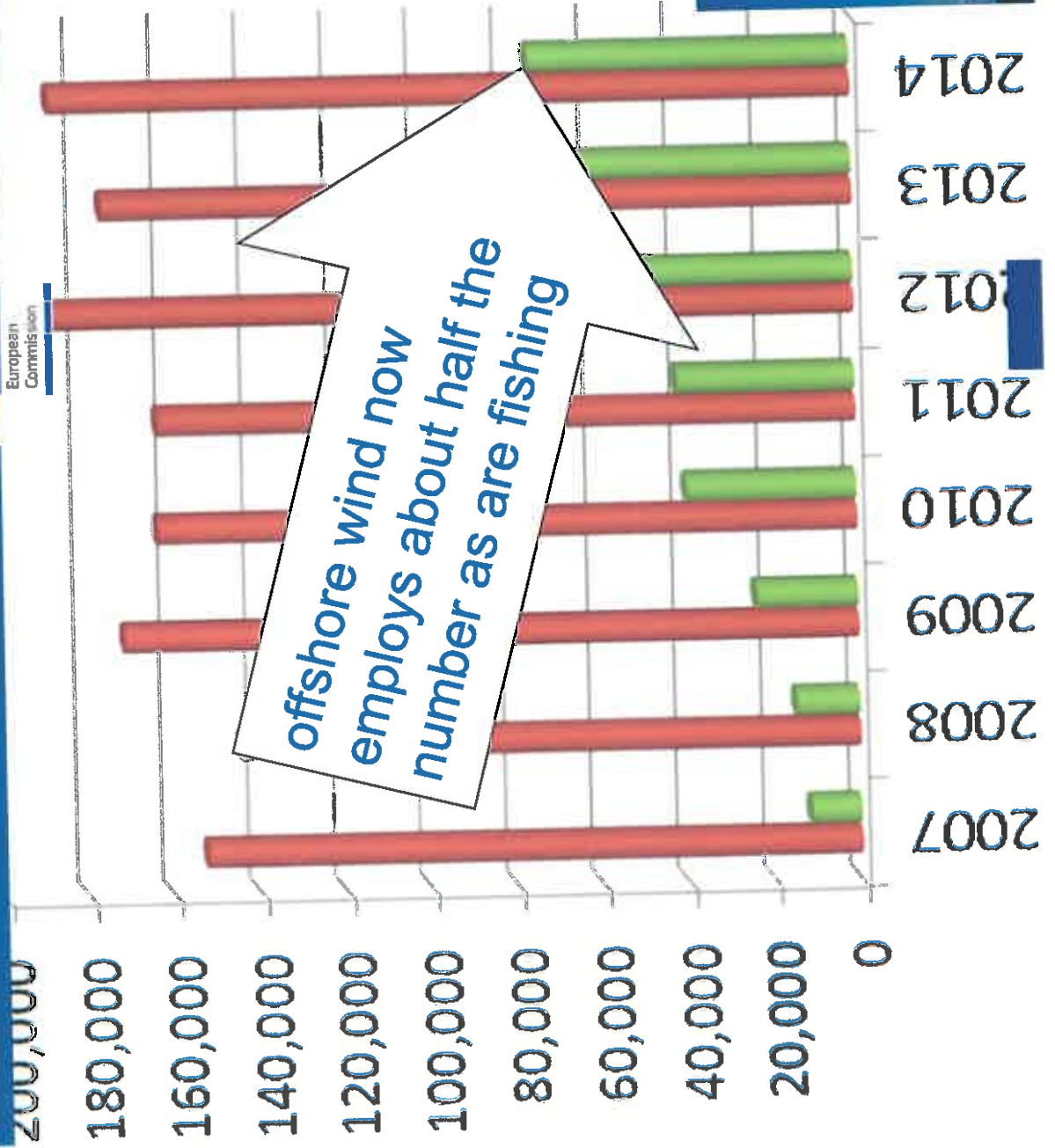
European
Commission

	turnover	average wages	jobs	productivity
fishing small scale fleet	1,000,000,000	4,200	64,000	1,600
fishing large scale fleet	4,900,000,000	21,000	68,000	7,300
fishing distant water fleet	920,000,000	26,000	7,200	13,000
marine aquaculture (finfish)	710,000,000	25,000	3,700	18,000
marine aquaculture (shellfish)	870,000,000	6,000	30,000	3,200
freshwater aquaculture	540,000,000	17,000	6,600	9,900
fishing and aquaculture (indirect)	.	.	35,000	.
processing and preserving	24,000,000,000	18,000	120,000	230,000
processing (indirect)	0	0	0	0
	.	.	97,000	.
	.	.	0	0

wind energy jobs



European Commission

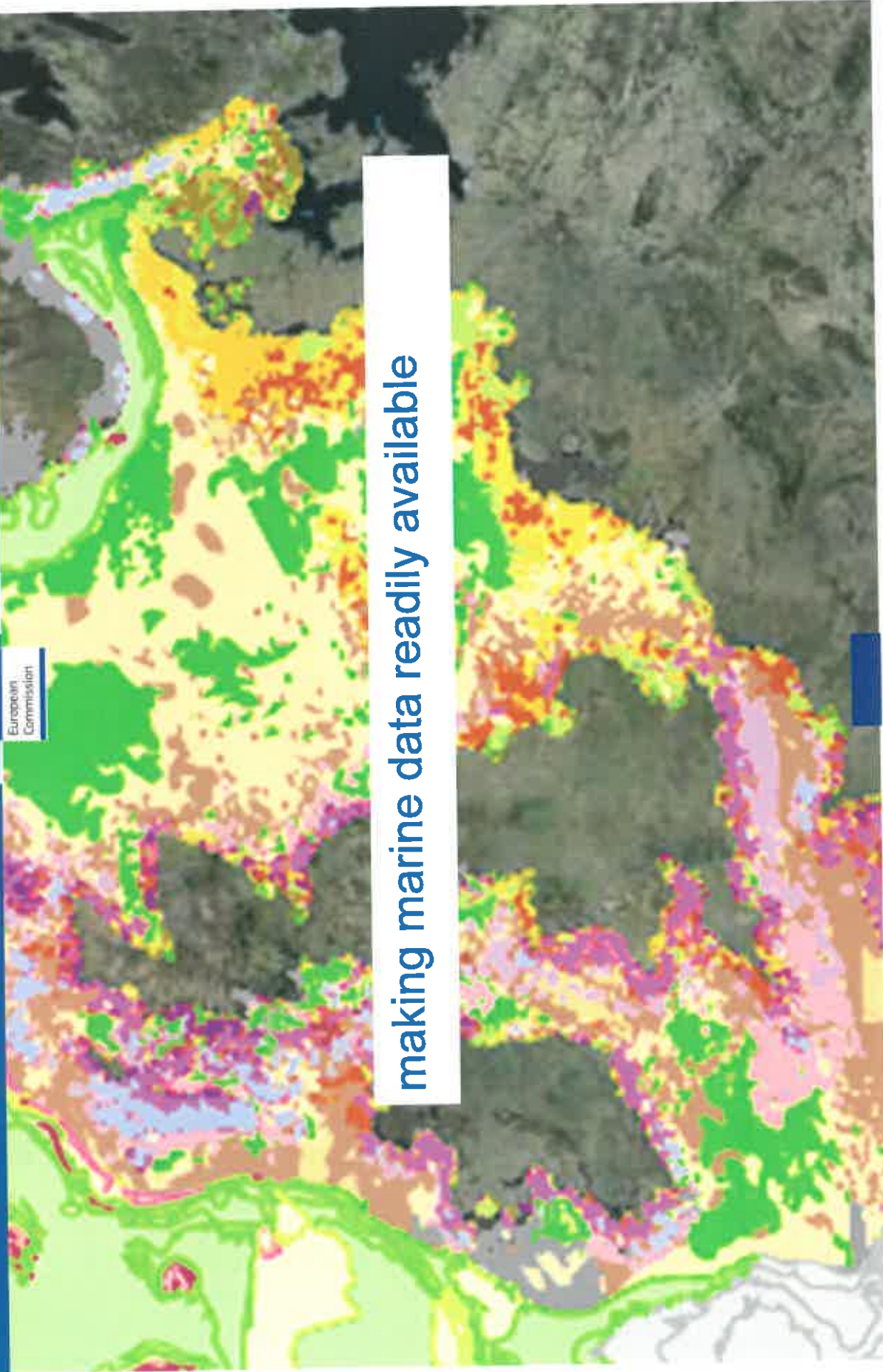


stimulating growth



how is EU
stimulating
blue growth?

reducing risk of investment



making marine data readily available

The European Marine Observation and Data Network (EMODnet) consists of more than 100 organisations assembling marine data, products and metadata to make these fragmented resources more available to public and private users relying on quality-assured, standardised and harmonised marine data which are interoperable and free of restrictions on use. EMODnet is currently in its second development phase with the target to be fully deployed by 2020.

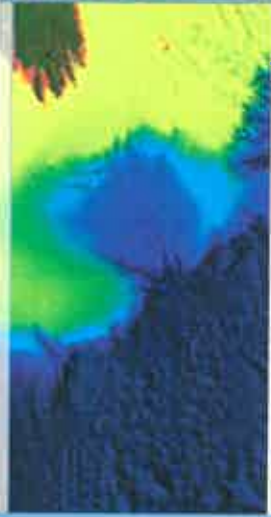
➔ More information about EMODnet and its development process

data are free of charge and free of restrictions of use

In order to assess the potential of the Blue Economy, the six EMODnet basins (the Arctic, Atlantic, Baltic 10/05/2016, with teams reporting reports can be found on the maritim

ges' relevant to the development of ed of spills in their respective sea 'Challenges' were launched on further information and the detailed

Bathymetry



Data on bathymetry (water depth), coastlines, and geographical location of underwater features: wrecks.

[Read more](#) [Data](#)



Data on seabed substrate, sea-floor geology, coastal behaviour, geological events, and minerals.

[Read more](#) [Data](#)

Habitats



Data on modelled seabed habitats based on seabed substrate, energy, biological zone, and salinity.

[Read more](#) [Data](#)

Chemistry



Biology



Physics

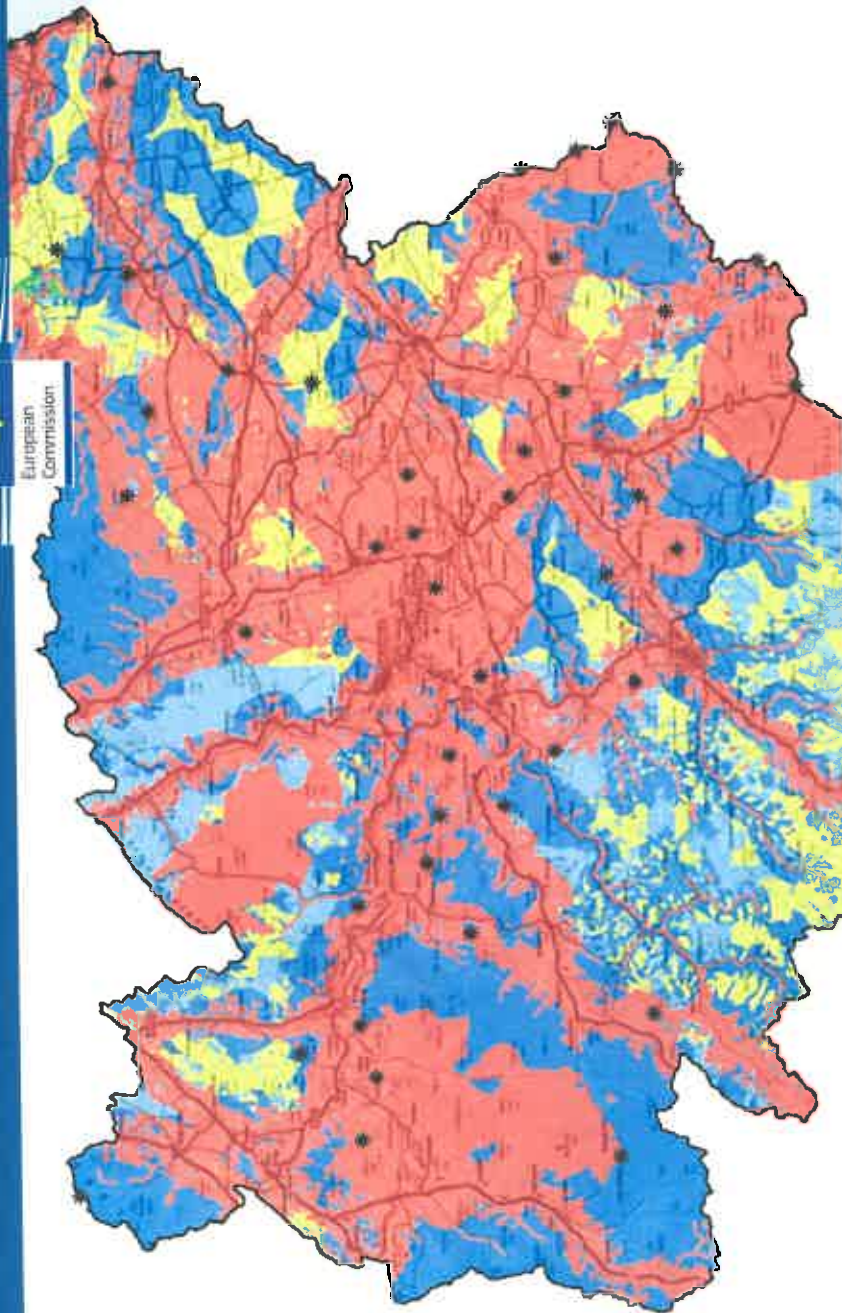


reducing risk of investment



April 2013

- Key**
- Area of significant protection
 - Moderate constraints (Higher)
 - Moderate constraints (Lower)
 - Minor constraints
 - Area of least constraint
 - * Iconic viewpoints



EU countries obliged to develop spatial plans

Contains information from IACS, Midland Scotland, SEPA, SNH
Prepared using tools from James Hutton Institute.
© Crown copyright and database right 2013. All rights reserved.
Ordnance Survey Licence number 100025463.

investing in research



- about €350 million a year on research
 - transport, energy, fisheries, aquaculture, biotechnology, environment, climate, raw materials, underwater robotics etc
- building internet gateway to results





Investing in innovation

- €110 billion of structural funds (European Regional Development Fund etc) devoted to innovation
- working with European Investment Bank to invest in emerging industries

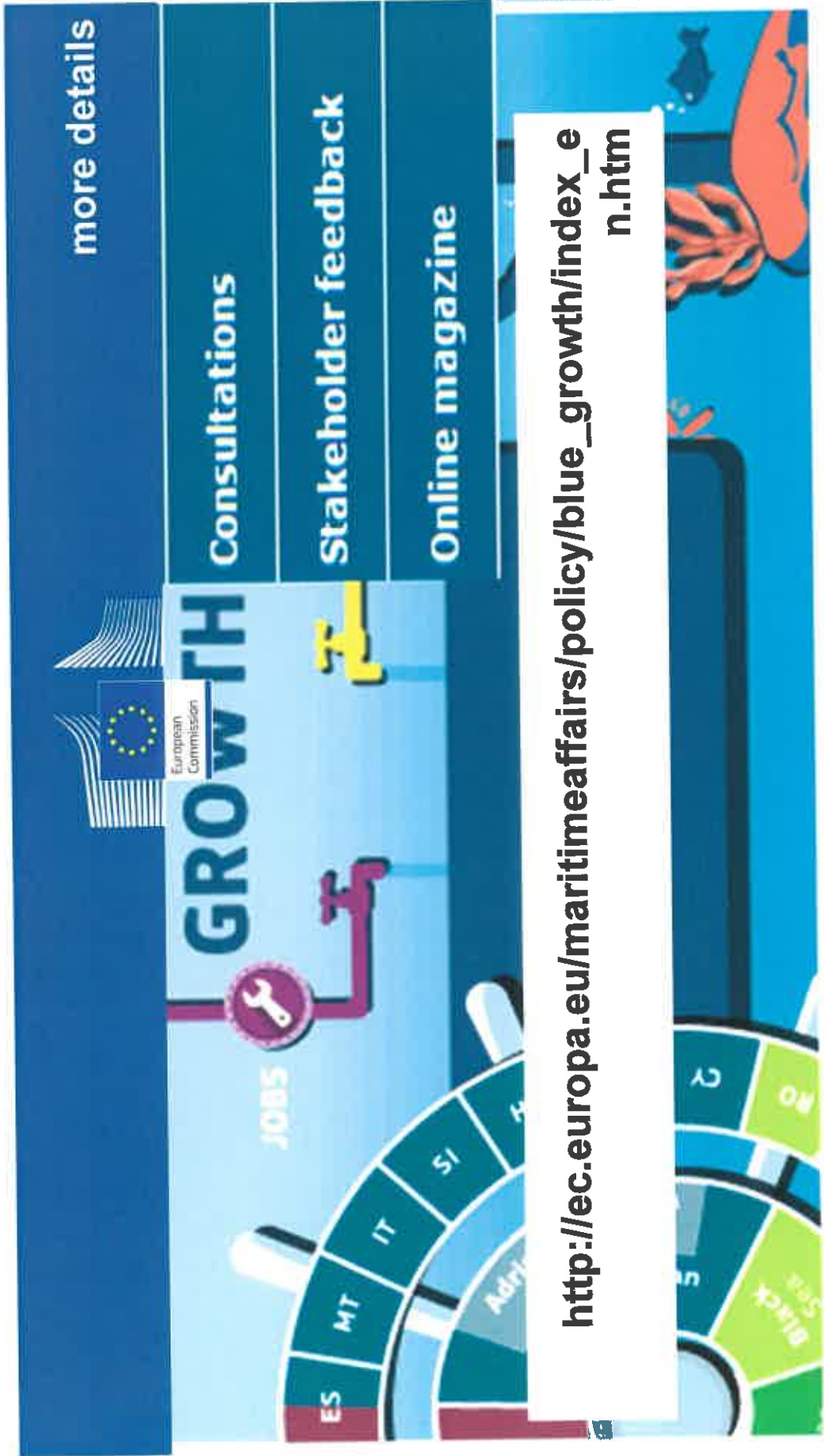


investing in skills



- grant programme for blue careers
- preparing skills sectorial cooperation on maritime technology
- expert group





http://ec.europa.eu/maritimeaffairs/policy/blue_growth/index_en.htm

Blue Growth is the long term strategy to support sustainable growth in the marine and maritime sectors as a whole. Seas and oceans are drivers for the European economy and have great potential for innovation and growth. It is the maritime contribution to achieving the goals of the Europe 2020 strategy for smart, sustainable and inclusive growth.

